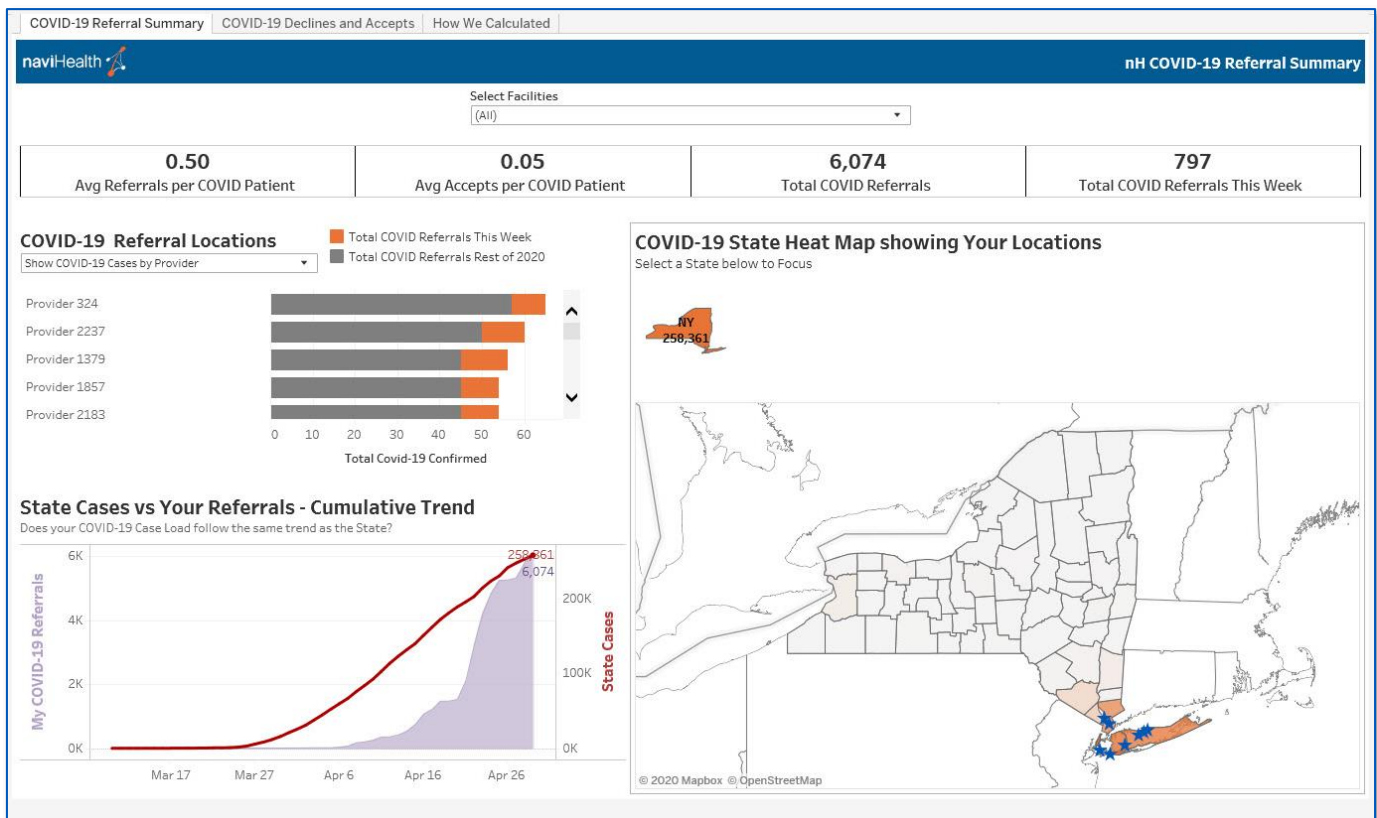


## nH Insight COVID-19 Dashboard for nH Discharge

The **nH Insight COVID-19 Dashboard** was built specifically for tracking COVID-19 trends and case throughput as they relate to your organization. This will provide you with a snapshot of COVID activity at your organization — combining proprietary, naviHealth-sourced data with publicly available data compiled by Johns Hopkins University (the latter of which includes information from WHO, CDC and more). Continue reading to learn more about the **COVID-19 Referral Summary** tab.



- **Average Referrals per COVID Patient:** Displays the average number of COVID-19 referrals sent by your organization.
- **Average Accepts per COVID Patient:** Displays the average number of “Accepted” responses received for COVID-19 referrals sent by your organization.
- **Total COVID Referrals:** Displays the total number of COVID-19 referrals sent by your organization.
- **Total COVID Referrals This Week:** Displays the total number of COVID-19 referrals sent this week.
- **COVID-19 Referral Locations:** Displays trends among providers to which your organization sends the most COVID-19 referrals.
- **State Cases vs Your Referrals – Cumulative Trend:** Displays how your organization compares to your state based on external data sources.
- **COVID-19 State Heat Map:** Displays where your facilities are located geographically in comparison to your state's COVID-19 hot spots.

## Frequently Asked Questions

**Q** How do I get to the nH Insight Dashboard?

**A** Simply log in to nH Discharge and navigate to nH Insight as you normally would. Once nH Insight appears, click **Dashboard** at the bottom of the menu on the left of your screen. The Dashboard's landing page will appear. Finally, click **nH Discharge** to access the nH Insight Dashboard for nH Discharge.

**Q** How often is data on the Dashboard refreshed?

**A** The nH Insight Dashboard refreshes daily at 12:00 a.m. EDT. COVID-19 data from WHO and CDC refreshes daily at 9:00 a.m. EDT.

**Q** What resources are available while using the Dashboard?

**A** Other than this document, the nH Insight Dashboard has a robust user guide. We will also offer training sessions with subsequent training guides. First-time users will be offered an in-application guided tour as well. For further training needs, please reach out to your naviHealth Account Manager. For training webinars, click [here](#).

**Q** Can I export data from the Dashboard?

**A** Yes. The top of your screen will have a toolbar with several buttons. Click **Download** to export an image, Excel ("Crosstab"), or PDF of your Dashboard. You can also drill down on data within the Dashboard and export that view. Once you export your data, you are free to manipulate it within Excel to fit your reporting needs. **NOTE:** If the Excel option ("Crosstab") is grayed out, select a chart on the Dashboard before clicking **Download**.

**Q** What if I want to view data from one facility in particular?

**A** Use the filter in the top-right of the Dashboard. Clicking the filter will display a drop-down menu of facilities which you have access within nH Discharge. Make your selection to update the entire Dashboard with data specific to that facility.

**Q** I want data from the Dashboard emailed to me. How can I set this up?

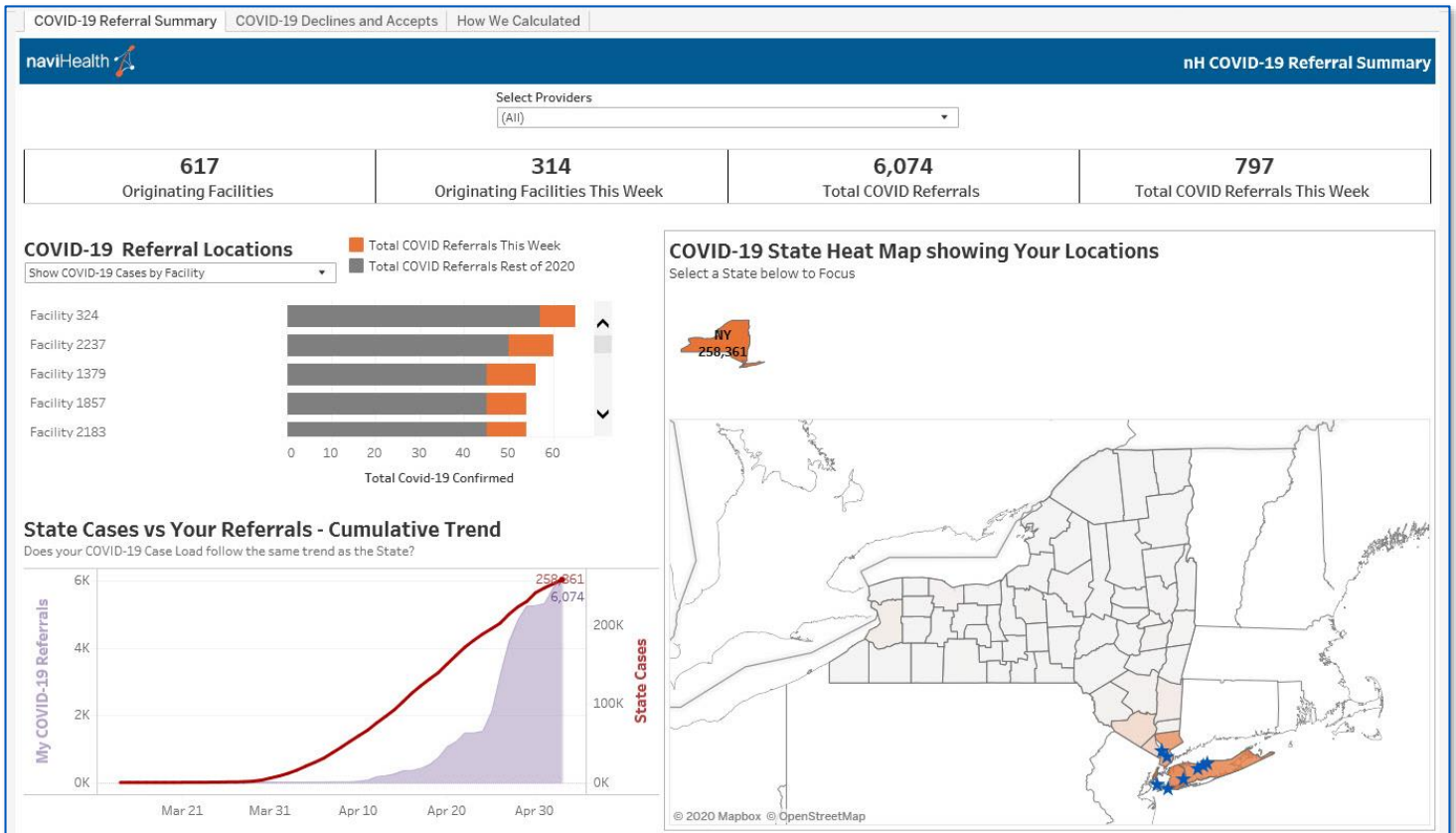
**A** During your demo of the nH Insight Dashboard, you may have noticed a Subscribe button within the application. Our Dashboard utilizes the latest Tableau technology; while Tableau has subscription functionality, we are fine-tuning this feature to fit your unique needs and ensure we deliver you the best, most secure product possible. Since development work on this feature is in-progress, we have hidden this button from your Dashboard. We look forward to updating you on this functionality in the near future.

**Q** What if I have more questions?

**A** If you have technical issues or problems using the Dashboard, please contact naviHealth Customer Support at 800-446-9614 and select "Option 4" or email [support@naviHealth.com](mailto:support@naviHealth.com). If you have questions surrounding interpretation of your data, please contact your naviHealth Account Manager.

## nH Insight COVID-19 Dashboard for nH Intake

The **nH Insight COVID-19 Dashboard** was built specifically for tracking COVID-19 trends and case throughput as they relate to your organization. This will provide you with a snapshot of COVID activity at your organization — combining proprietary, naviHealth-sourced data with publicly available data compiled by Johns Hopkins University (the latter of which includes information from WHO, CDC and more). Continue reading to learn more about the **COVID-19 Referral Summary** tab.



- **Originating Facilities:** Displays the total number of facilities referring COVID-19 patients to your organization.
- **Originating Facilities This Week:** Displays the total number of facilities referring COVID-19 patients this week.
- **Total COVID Referrals:** Displays the total number of COVID-19 referrals received by your organization.
- **Total COVID Referrals This Week:** Displays the total number of COVID-19 referrals received this week.
- **COVID-19 Referral Locations:** Displays COVID-19 referral trends among top referring facilities.
- **State Cases vs Your Referrals – Cumulative Trend:** Displays how your organization compares to your state based on external data sources.
- **COVID-19 State Heat Map:** Displays where your providers are located geographically in comparison to your state's COVID-19 hot spots.

## Frequently Asked Questions

**Q** How do I get to the nH Insight Dashboard?

**A** Log in to naviHealth as you normally would by going to <https://network.curaspan.com/connect/commonservices>. Upon login, two options will display: **nH Insight** and **nH Intake**. Select **nH Insight** to access the “Reports” screen and then click **Insight Dashboard** at the top of the Menu.

**Q** How often is data on the Dashboard refreshed?

**A** The nH Insight Dashboard refreshes daily at 12:00 a.m. EDT. COVID-19 data from WHO and CDC refreshes daily at 9:00 a.m. EDT.

**Q** What resources are available while using the Dashboard?

**A** Other than this document, the nH Insight Dashboard has a robust user guide. We will also offer training sessions with subsequent training guides. First-time users will be offered an in-application guided tour as well. For further training needs, please reach out to your naviHealth Account Manager.

**Q** Can I export data from the Dashboard?

**A** Yes. The top of your screen will have a toolbar with several buttons. Click **Download** to export an image, Excel (“Crosstab”), or PDF of your Dashboard. You can also drill down on data within the Dashboard and export that view. Once you export your data, you are free to manipulate it within Excel to fit your reporting needs. **NOTE:** If the Excel option (“Crosstab”) is grayed out, select a chart on the Dashboard before clicking **Download**.

**Q** What if I want to view data from one facility in particular?

**A** Use the filter in the top-right of the Dashboard. Clicking the filter will display a drop-down menu of facilities to which you have access within nH Discharge. Make your selection to update the entire Dashboard with data specific to that facility.

**Q** I want data from the Dashboard emailed to me. How can I set this up?

**A** During your demo of the nH Insight Dashboard, you may have noticed a “Subscribe” button within the application. Our Dashboard utilizes the latest Tableau technology; while Tableau has subscription functionality, we are fine-tuning this feature to fit your unique needs and ensure we deliver you the best, most secure product possible. Since development work on this feature is in-progress, we have hidden this button from your Dashboard. We look forward to updating you on this functionality in the near future.

**Q** What if I have more questions?

**A** If you have technical issues or problems using the Dashboard, please contact naviHealth Customer Support at 800-446-9614 and select “Option 4”, or email [support@naviHealth.com](mailto:support@naviHealth.com). If you have questions surrounding interpretation of your data, please contact your naviHealth Account Manager.